



**SCAFWEST**  
SAFE RELIABLE SCAFFOLDING SOLUTIONS

## CAPABILITY STATEMENT



## ABOUT US



ScafWest is a Western Australian owned and operated scaffolding & rope access services business founded in 1992. Over the past four decades, we have earned an enviable reputation as one of Western Australia's leading and most dependable access contractors, working alongside high profile West Australian organisations across Mining & Resources, Defence & Commercial Marine, Industrial, Infrastructure, and Civil & Construction sectors. The company combines leading access management expertise with innovative approaches and customised solutions to support complex project execution and high-level site management.

Our corporate philosophy is founded on delivering industry defining support to key projects within our target sectors and contributing to Western Australia's ongoing economic growth and prosperity. Our ambition is to be consistently acknowledged as Western Australia's leading provider of scaffolding & rope access solutions to major projects through our experienced management, industry leading safety systems, and cost effective, safe designs executed by a skilled and reliable workforce.

## OUR BUSINESS MODEL

ScafWest's business model is founded on earning and maintaining long lasting partnerships with key clients based on trust, safety, quality, innovation and exemplary performance. Our mantra is to always deliver safely on promise, on time and on budget. We specialise in high risk tasks, working at heights and in challenging environments.

# OUR SERVICE OFFER

ScafWest offers specialized, end-to-end scaffolding & rope access solutions covering:

-  **Project Design & Planning:** Using in-house Design & Engineering capabilities.
-  **Project Management:** Comprehensive site coordination, supervision, contract and financial compliance.
-  **Safety Management System:** Design and implementation of site specific scaffold & rope access safety systems integrated with client procedures.
-  **Scalable, Work Ready Labour:** Highly skilled front-line labour, readily available for site mobilisation.
-  **Equipment Hire & Transport:** Immediate access to fit for purpose scaffold systems and high quality rope access equipment.
-  **Commitment to Excellence:** Continued improvement, accreditation, training and professional development.

## Accreditations

ISO 9001 Quality Management System;  
ISO 45001 OH&S Management System;  
ISO 14001 Environmental Management System;



## Exemplary Safety Record

ScafWest places the highest emphasis on workplace safety in compliance with our ISO 45001 accreditation. We supply extensive on-site labour each year with negligible recorded injuries, restricted work, or lost time events.

# PILLARS OF SUCCESS

Our value proposition is founded on delivering end-to-end scaffolding & rope access solutions that are safe, reliable, cost-effective and tailored to best meet our clients' needs. We do this with an unwavering commitment to:

## Safety

Demonstrating a commitment to exceed baseline safety expectations.

## Reliability

Delivering on spec, on time, on budget, every time.

## Efficiency

Deploying proven and tested operations without compromising quality.

## Training

Empowering our team at all levels to problem-solve and apply industry-leading skills.

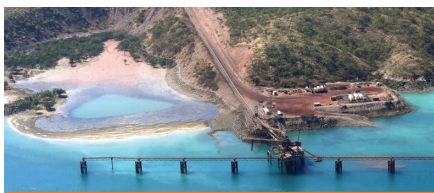
## Innovation

Applying practical engineering excellence and creative design thinking.

## Teamwork

Encouraging collaboration within our team and all other players on site.

# OUR TARGET SECTORS



## Mining & Resources:

Supporting Western Australia's diverse mining and resources operations including iron ore, lithium, gold, mineral sands, and oil & gas.



## Defence & Commercial Marine:

Partnering with major defence and marine contractors in Henderson, Kwinana, Garden Island, Exmouth and Cairns.



## Industrial:

Supporting companies involved in the manufacturing and processing of power, clean energy, grain, chemicals, cement, fertilizer and building products.



## Infrastructure:

Providing innovative solutions for access & containment to bridges, ports, jetties and other major infrastructure.



## Construction & Building Maintenance:

Offering expertise to projects from major refinery construction, complex civils & building maintenance throughout Western Australia.



# OUR RESOURCES

ScafWest employs an experienced team of Site Managers, Supervisors, Leading Hands, Scaffolders & Rope Access Technicians (IRATA). All team members are trained above industry safety and production standards ensuring we provide the client an exceptional service.

- Design & Engineering Department
- Operations Manager
- Project Managers
- IMS Managers
- Health & Safety Officers
- Contracts & Accounts Manager
- Estimators
- Finance Department

In addition to our committed and highly capable workforce, our operations are supported by over 2,500 tonnes of scaffold material, a dedicated scaffold & rope access training area, numerous rope access kits, a fleet of 40+ vehicles including mine spec utes, buses and trucks, extensive safety equipment, and a dedicated training area on a 20,000m<sup>2</sup> premises.

# PROJECT HIGHLIGHTS



## ASC Pty Ltd - Collins Class Submarine Maintenance

ScafWest has proudly supported ASC Pty Ltd in Collins Class Submarine maintenance for over a decade. We deliver innovative scaffolding solutions, ensuring safe, hassle-free, and cost-effective operations. With on-demand call-out support, we guarantee timely and reliable access solutions, allowing maintenance activities to proceed efficiently and without delays, whilst adhering to strict security requirements.



## Mount Gibson Iron - Koolan Island Maintenance

ScafWest is a trusted partner of Koolan Iron Ore, providing skilled labour to support critical plant maintenance. Our team upholds strict safety standards and works efficiently to ensure seamless operations with no delays and minimal downtime. Through cost-effective solutions, we enhance operational efficiency, reduce expenses, and maximise mine profitability to keep productivity at its highest level.



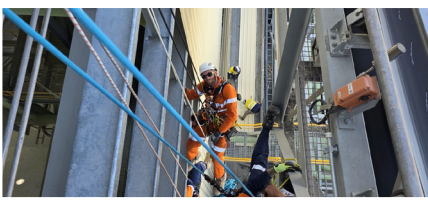
## Talison Lithium - Greenbushes Mine Maintenance

ScafWest proudly supports Talison Lithium by providing highly skilled labour for plant maintenance. Our team adheres to strict safety protocols, ensuring minimal to no incidents, and works efficiently to ensure zero delays in critical maintenance activities. By streamlining operations and minimising downtime, we help reduce costs and maximise mine profitability, keeping productivity at its peak.



## Civmec Defence Industries - OPV Construction

ScafWest has been working with Civmec Defence Industries in the construction of four Offshore Patrol Vessels for the Royal Australian Navy under the SEA 1180 program. We deliver innovative & reliable access solutions, ensuring safe, compliant, hassle-free, and cost-effective operations. With our large defence ready work force we are able to scale up and down quickly to align with project requirements ensuring critical construction activities can continue without delays.



## Rope Access Cladding Project - CEM Alliance

ScafWest supplied suitably qualified and capable rope access technicians and equipment to complete over 2000m<sup>2</sup> of cladding and flashing works not accessible by conventional methods. With multiple rope access crews ScafWest overseen the safe and efficient operations ensuring a complex project was completed ahead of schedule, incident free and with the highest quality workmanship.

## KEY PERSONNEL



**Andrew Dunne**  
Managing Director  
0408 903 025  
andrewdunne@scafwest.com



**Scott Bird**  
Business Development |  
Executive Director  
0438 822 254  
scottbird@scafwest.com



**Dan Rose**  
General Manager  
0488 081 121  
danrose@scafwest.com



Visit us at [www.scafwest.com.au](http://www.scafwest.com.au)

☎ (08) 9302 5539 | ✉ [admin@scafwest.com](mailto:admin@scafwest.com)

🏠 326 Gnangara Rd, Landsdale, Western Australia 6065